

BöttcherTex Supreme

Pre-impregnated cleaning cloth for sheetfed offset

with conventional inks in automatical cloth-type washing units without supply line	<i>appli- cation</i>
<ul style="list-style-type: none"> 🌍 Impregnated with VOC-free solvent, flash point > 110 °C; quantity adapted to the needs in the corresponding application 🌍 Ready to use. 🌍 Packed in vacuum sealed, diffusion tight plastic foil. 🌍 No drying out of the cloth roll in the press 🌍 Equal distribution of the solvent in the cloth roll 🌍 Very high cleaning power 🌍 Excellent rip, pick and abrasion resistance → no fibre residues on the blanket 🌍 Consistent high printing quality after cleaning process 	<i>properties</i>
<ul style="list-style-type: none"> 🌍 Attention: Store horizontally! 	<i>advice</i>



BöttcherTex Supreme for conventional sheetfed offset printing				
Article code	Press type	Width (mm)	Length (m)	Quantity of rolls per sales unit
800867	Ryobi 520	533	9	28
800865	Komori L-29	774	9	28
800866	Ryobi 920	923	9	24
800849	Komori L-40	1054	15	15
800870	KBA Ra 105	1070	15	15
800856	KBA Ra 106	1090	15	15
800829	KBA Ra 106 (Plus)	1090	15	15
800845	KBA Ra 142	1460	12,6	15
800844	KBA Ra 162	1660	12,6	15
800876	MAN R200	745	6	15

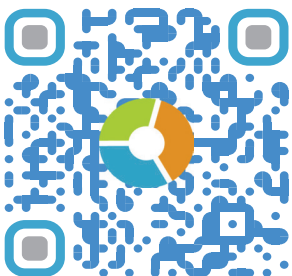
August 18

All our product information sheets you will find on the internet www.boettcher-systems.com.
Take advantage of our homepage and learn more about our products and services.

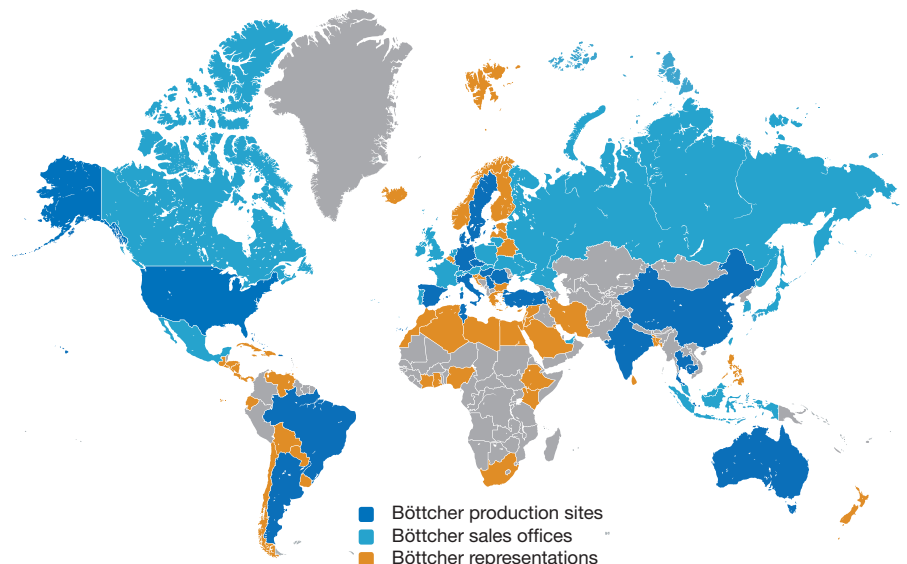
Felix Böttcher GmbH & Co. KG

Headquarter

Stolberger Str. 351 - 353
50933 Cologne / Germany
Phone 0221 4907 - 1
Fax 0221 4907 - 435
koeln@boettcher-systems.com



www.boettcher.de/contact



The purpose of these technical data is to assist our customers. We list general experience and laboratory test. Translation of these to actual applications is, however, subject to a variety of factors which are beyond our control. We ask for understanding that claims can not be based upon them.